

**CTDSP1 Antibody (Center)**  
**Purified Rabbit Polyclonal Antibody (Pab)**  
**Catalog # AW5411****Specification**

---

**CTDSP1 Antibody (Center) - Product Information**

Application	WB,E
Primary Accession	<a href="#">O9GZU7</a>
Other Accession	<a href="#">P58466</a>
Reactivity	Human, Mouse
Host	Rabbit
Clonality	Polyclonal
Calculated MW	H=29;M=29 KDa
Isotype	Rabbit IgG
Antigen Source	HUMAN

**CTDSP1 Antibody (Center) - Additional Information****Gene ID** 58190**Antigen Region**  
96-130**Other Names**

Carboxy-terminal domain RNA polymerase II polypeptide A small phosphatase 1, Nuclear LIM interactor-interacting factor 3, NLI-IF, NLI-interacting factor 3, Small C-terminal domain phosphatase 1, SCP1, Small CTD phosphatase 1, CTDSP1, NIF3, NLIIF, SCP1

**Dilution**

WB~~1:1000

**Target/Specificity**

This CTDSP1 antibody is generated from a rabbit immunized with a KLH conjugated synthetic peptide between 96-130 amino acids from the Central region of human CTDSP1.

**Format**

Purified polyclonal antibody supplied in PBS with 0.09% (W/V) sodium azide. This antibody is purified through a protein A column, followed by peptide affinity purification.

**Storage**

Maintain refrigerated at 2-8°C for up to 2 weeks. For long term storage store at -20°C in small aliquots to prevent freeze-thaw cycles.

**Precautions**

CTDSP1 Antibody (Center) is for research use only and not for use in diagnostic or therapeutic procedures.

**CTDSP1 Antibody (Center) - Protein Information**

**Name** CTDSP1

**Synonyms** NIF3, NLIIF, SCP1

**Function**

Preferentially catalyzes the dephosphorylation of 'Ser-5' within the tandem 7 residue repeats in the C-terminal domain (CTD) of the largest RNA polymerase II subunit POLR2A. Negatively regulates RNA polymerase II transcription, possibly by controlling the transition from initiation/capping to processive transcript elongation. Recruited by REST to neuronal genes that contain RE-1 elements, leading to neuronal gene silencing in non-neuronal cells.

**Cellular Location**

Nucleus. Note=Colocalizes with RNA polymerase II

**Tissue Location**

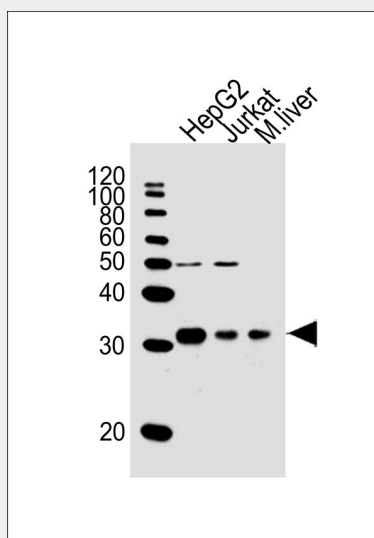
Expression is restricted to non-neuronal tissues. Highest expression in skeletal muscle, spleen, lung and placenta

**CTDSP1 Antibody (Center) - Protocols**

Provided below are standard protocols that you may find useful for product applications.

- [Western Blot](#)
- [Blocking Peptides](#)
- [Dot Blot](#)
- [Immunohistochemistry](#)
- [Immunofluorescence](#)
- [Immunoprecipitation](#)
- [Flow Cytometry](#)
- [Cell Culture](#)

**CTDSP1 Antibody (Center) - Images**



All lanes : Anti-CTDSP1 Antibody (Center) at 1:1000 dilution Lane 1: HepG2 whole cell lysates Lane 2: Jurkat whole cell lysates Lane 3: mouse liver lysates Lysates/proteins at 20 µg per lane. Secondary Goat Anti-Rabbit IgG, (H+L), Peroxidase conjugated at 1/10000 dilution Predicted band size : 29 kDa Blocking/Dilution buffer: 5% NFDm/TBST.

**CTDSP1 Antibody (Center) - Background**

Preferentially catalyzes the dephosphorylation of Ser-5 within the tandem 7 residues repeats in the C-terminal domain (CTD) of the largest RNA polymerase II subunit POLR2A. Negatively regulates RNA polymerase II transcription, possibly by controlling the transition from initiation/capping to processive transcript elongation. Recruited by REST to neuronal genes that contain RE-1 elements, leading to neuronal gene silencing in non-neuronal cells.

**CTDSP1 Antibody (Center) - References**

Marquet S., et al. Mamm. Genome 11:755-762(2000).  
Yeo M., et al. J. Biol. Chem. 278:26078-26085(2003).  
Li W.B., et al. Submitted (APR-2003) to the EMBL/GenBank/DDBJ databases.  
Hillier L.W., et al. Nature 434:724-731(2005).  
Yeo M., et al. Science 307:596-600(2005).

**CTDSP1 Antibody (Center) - Citations**

- [Deubiquitinase USP29 promotes gastric cancer cell migration by cooperating with phosphatase SCP1 to stabilize Snail protein](#)